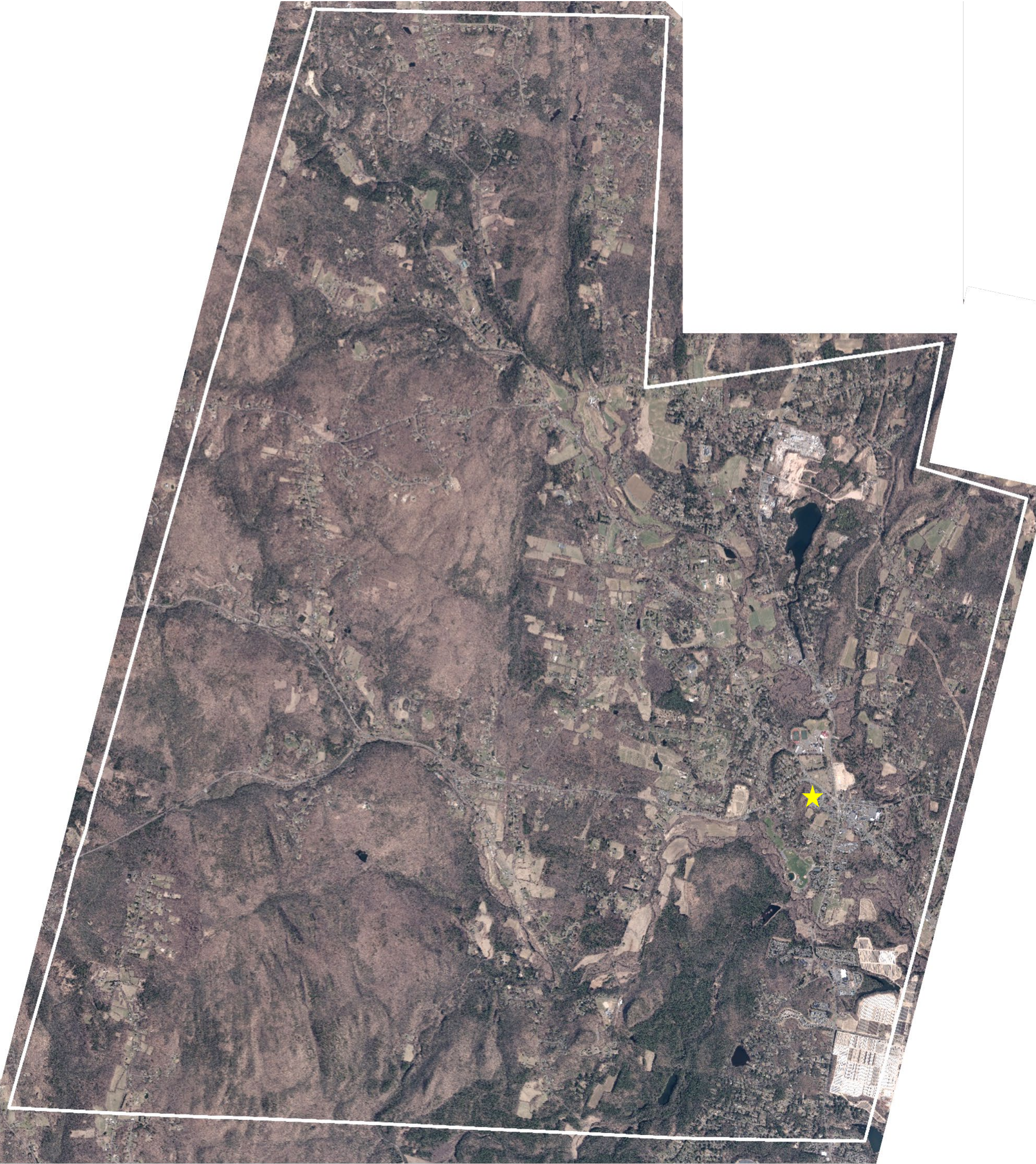



What is special about Granby?

Write a statement about what you think makes Granby a special community.
What words come to mind to describe Granby that makes it special?

PROUDS

What makes you proud?
What do you like?
Mark with a Green Dot




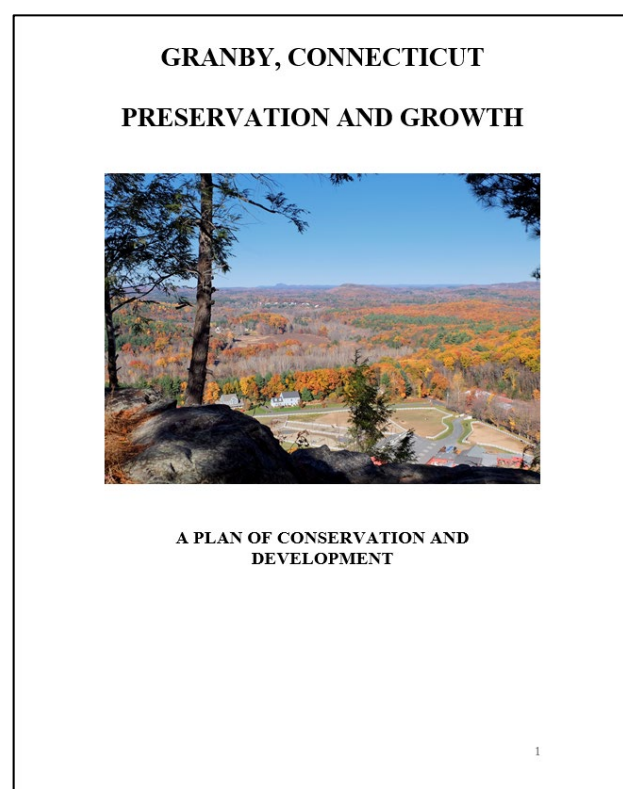
 You are Here

Sorrys

What do you wish was different?
What don't you like?
Mark with a Red Dot



 You are Here



2016 POCD

A Ten Year Vision

Based on this Plan of Conservation and Development, we believe that in 10 years we will find:

That overall, the Town of Granby remains as a rural residential community where:

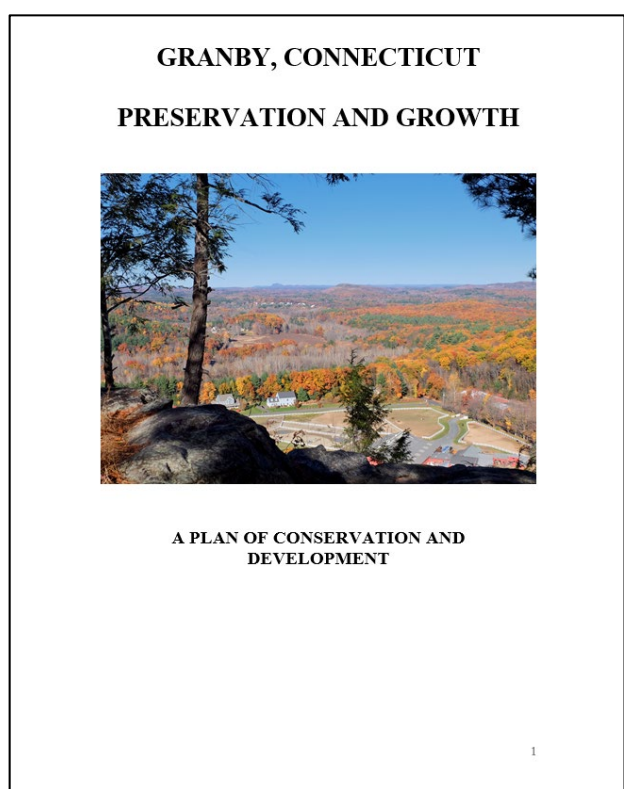
- The Town continues to be well managed and residents enjoy and appreciate living here.
- Residents enjoy a strong sense of community founded in our Fundamental Values.
- Residents feel safe in their homes and secure in the knowledge that their friends, neighbors and local officials care about their well-being.
- Residents are greatly involved in the operation of the local government.
- A high value is placed on agricultural activities, from the production of crops and the keeping of livestock to backyard gardening and the preservation of barns.
- Residents recognize the importance of a solid education, recreational activities and businesses serving Granby and the Region.
- The rural residential character of the Town has been preserved.

That the Town Center becomes a more vibrant commercial and mixed-use area with:

- The modest expansion of public water, sewer and natural gas lines.
- Additional sidewalks and crosswalks making the entire Center pedestrian friendly.
- Attractive street and business lighting, which enhances nighttime activity.
- A variety of new retail and service businesses.
- An increased number of restaurants, many of which offer outside seating.
- A greater mix of new housing units, particularly multifamily and rental units.
- The beautification of existing buildings through a façade improvement program.
- Harmonious and attractive business signage.
- Improved landscaping, public flower gardens, large planters and hanging flower baskets.
- Improved vehicular traffic flow.
- The preservation and re-use of historic buildings.
- A detailed strategic plan, which has helped to bring about the above improvements and which will guide and encourage future improvements.

That Granby homes continue to be primarily owner occupier, single family, with:

- New opportunities for homes on smaller lots, consistent with existing infrastructure.
- An increase in the number of energy efficient and energy independent homes.
- An expansion in the number of rental units.
- More “walkable” neighborhoods.
- Increased housing opportunities for a more diverse group of residents.
- A significant growth in housing opportunities for the elderly.
- The continued increase in the number of accessory apartments.
- An expanded number of homes being served by natural gas and alternative fuels.
- Increased opportunities for home occupations.
- An increase in the number of homes that are within walking distance of a transit line.
- Strong demand for homes on larger lots and mini farms.
- Strong demand for existing homes in established neighborhoods.
- The regular rehabilitation, energy conversion, preservation, modernization and expansion of the existing homes.



2016 POCD

A Ten Year Vision

(continued)

That the Town Roads:

- Are maintained, safe and convenient.
- Reflect the rural character of the Town.
- Have been constructed and reconstructed utilizing road calming techniques to reduce speed in residential areas.
- Have become increasingly attractive through preservation of existing streetscapes, the planting of street trees, and preservation of stonewalls.
- Are designed and maintained for the safety and convenience of bicyclists and pedestrians.
- Have been redesigned as necessary with improved intersections, alignments and safety.

That Commercial Development:

- Has seen appropriate growth compatible with the Town's fundamental values.
- Has seen minor changes in the types of developments that can best serve the community.
- Reflects the character and the makeup of the community.
- Serves a variety of recreational users.
- Has grown in an attractive manner and avoided a pattern of strip development.
- Provides an increased number of employment opportunities for our residents.
- Is designed with attractive, environmentally sensitive parking areas, which are appropriately placed in relationship to the design and location of the commercial building.
- Has expanded together with changes to the zoning regulations, which respond to changes in the commercial market.
- Has undergone a process that includes a specific design review for each new project.

That the Town's Preserved Open Space:

- Has resulted in the maintenance of our vistas, views, and ridge tops.
- Has expanded in accordance with the Town's Open Space Plan.
- Has expanded through development application, by targeted Town purchases, and through the efforts of other Town, State, or private entities.
- Is expanded with the continued cooperation of the Town, the State and a variety of preservation groups, particularly McLean's and the Granby Land Trust.
- Has expanded by linking new areas of open space with existing open space parcels and allowing for the expansion of open space corridors, paths, and trails.
- Has included threatened forest lands and recognizes the importance of contiguous forest areas.
- Continues to serve the Town's residents, while preserving wildlife habitat.
- Provides recreational opportunities for the people of Granby and the surrounding region.

That the Town's quality of life has remained high

- With an exemplary School System.
- With quality recreational programs and athletic facilities.
- With a wide range of services for our senior residents.
- With an active celebration of the arts.
- With peace and quiet, fresh air and serenity.
- While surrounded by agriculture and open space.

Granby Center Sidewalks

Mark on the map below where you would like to see sidewalks in the Granby Center area.
Existing sidewalks are shown in red.



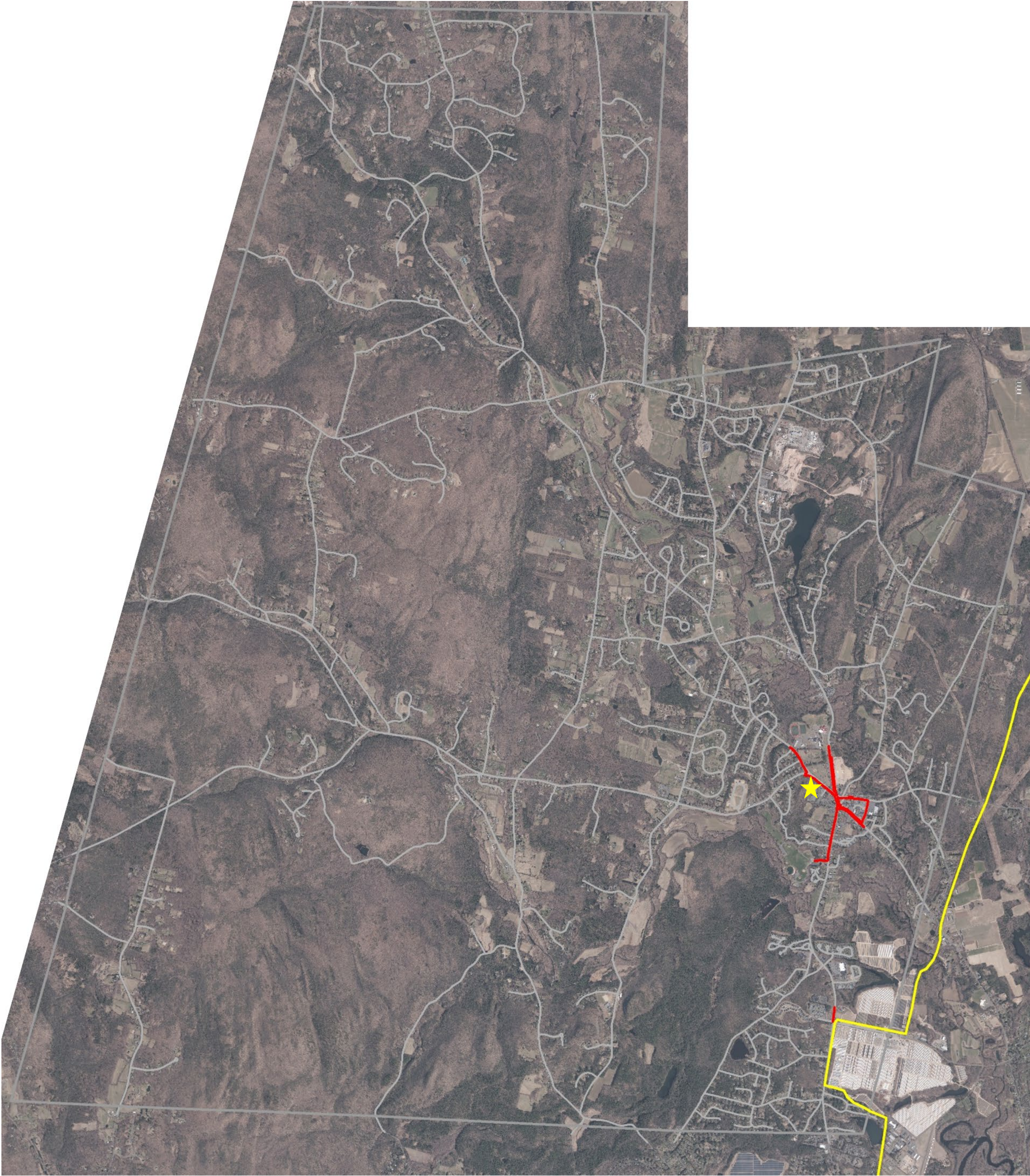
Road and Intersection Improvements

Identify intersections or roads that need improvements.



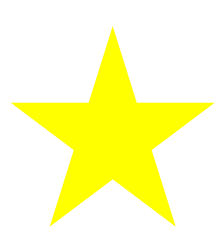
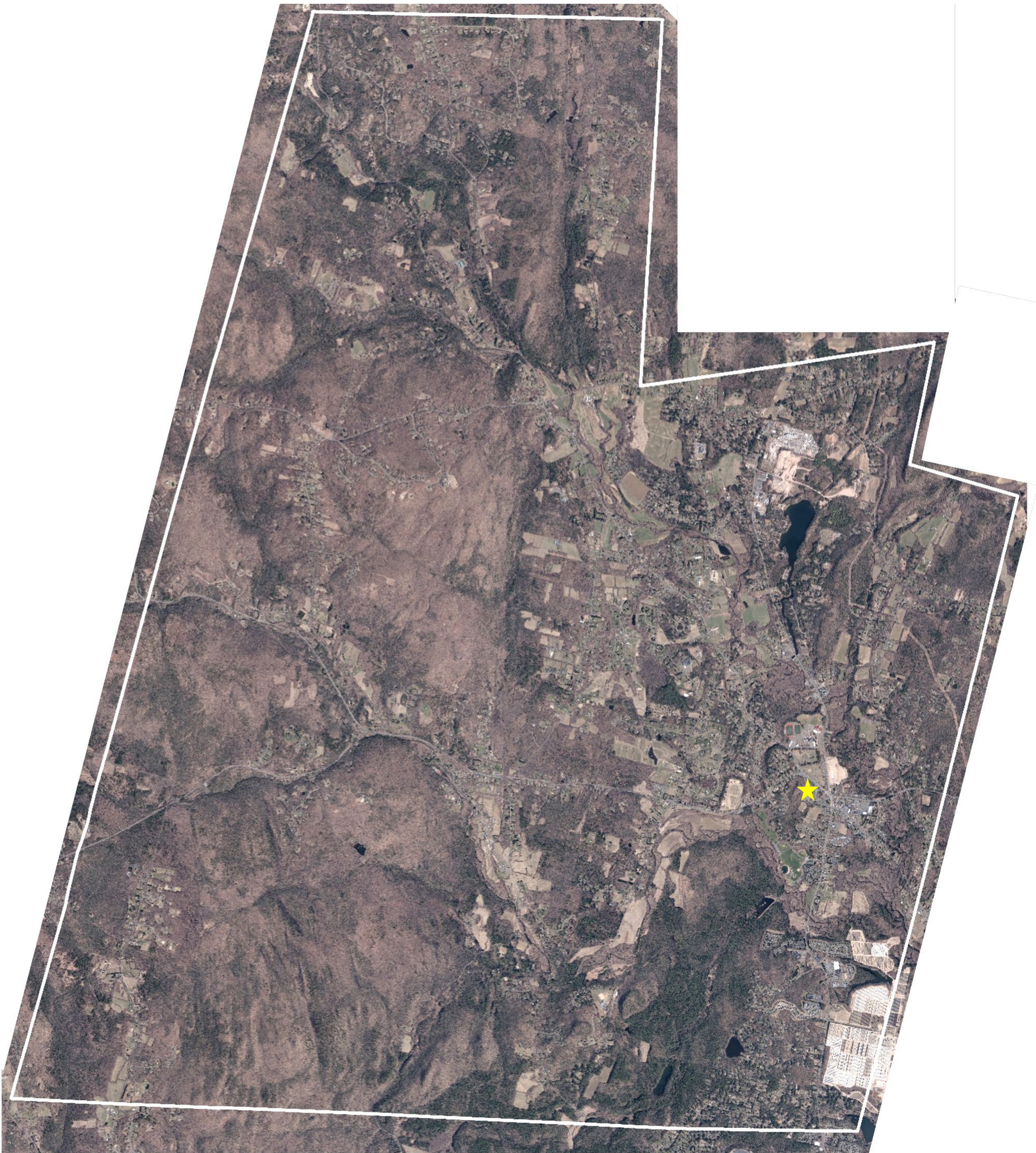
Sidewalks, Trails and Bike Facilities

Identify locations for desired sidewalks, trails, and bike facilities.
Existing sidewalks are shown in red. The Canal Heritage Trail is shown in yellow.



Are there specific locations or focus areas where the Town should prioritize conservation and preservation efforts?

Mark or note on the map below



You are Here

Is Granby lacking any specific community facilities, amenities, or services?