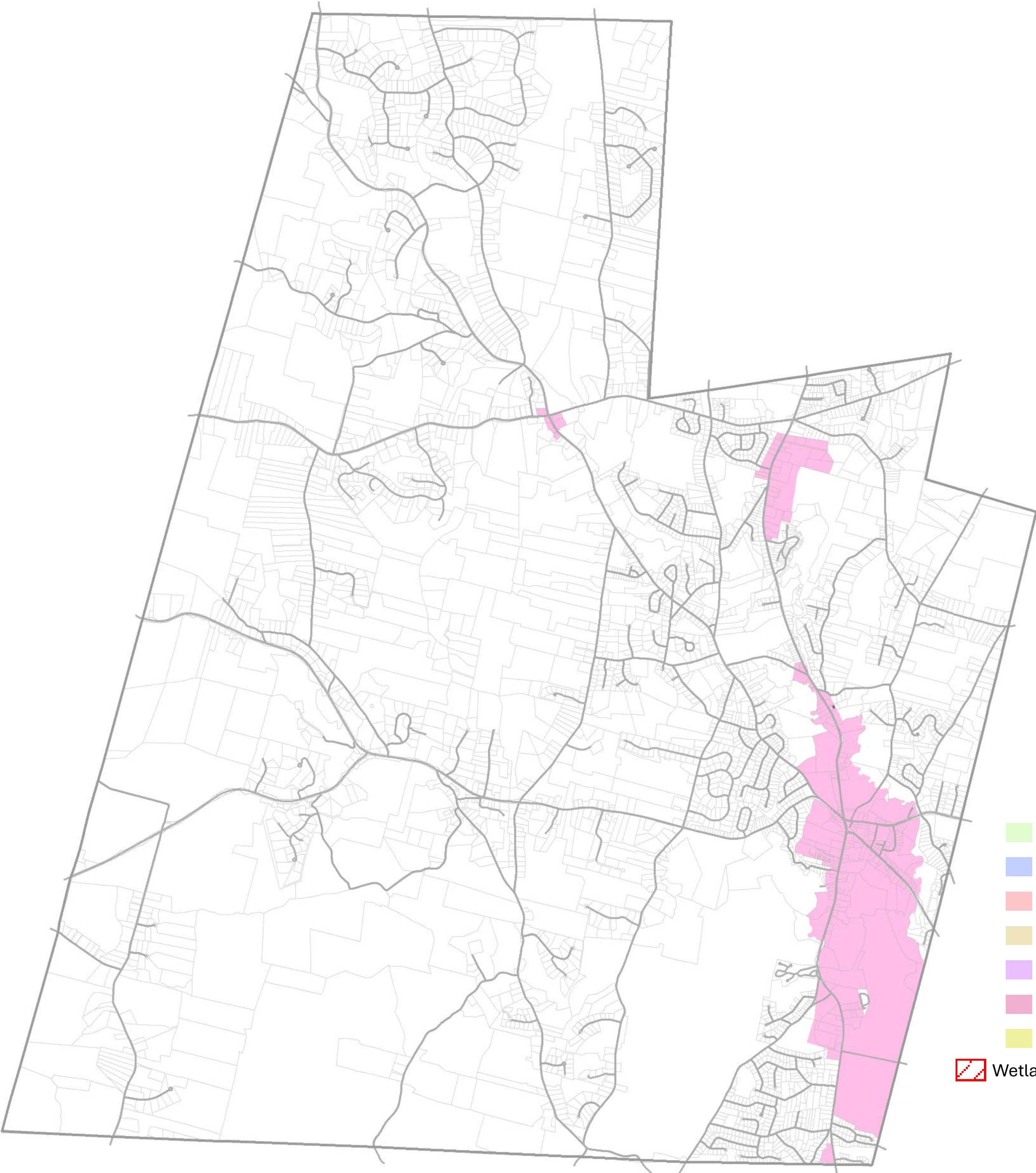


# Economic Development & Infrastructure

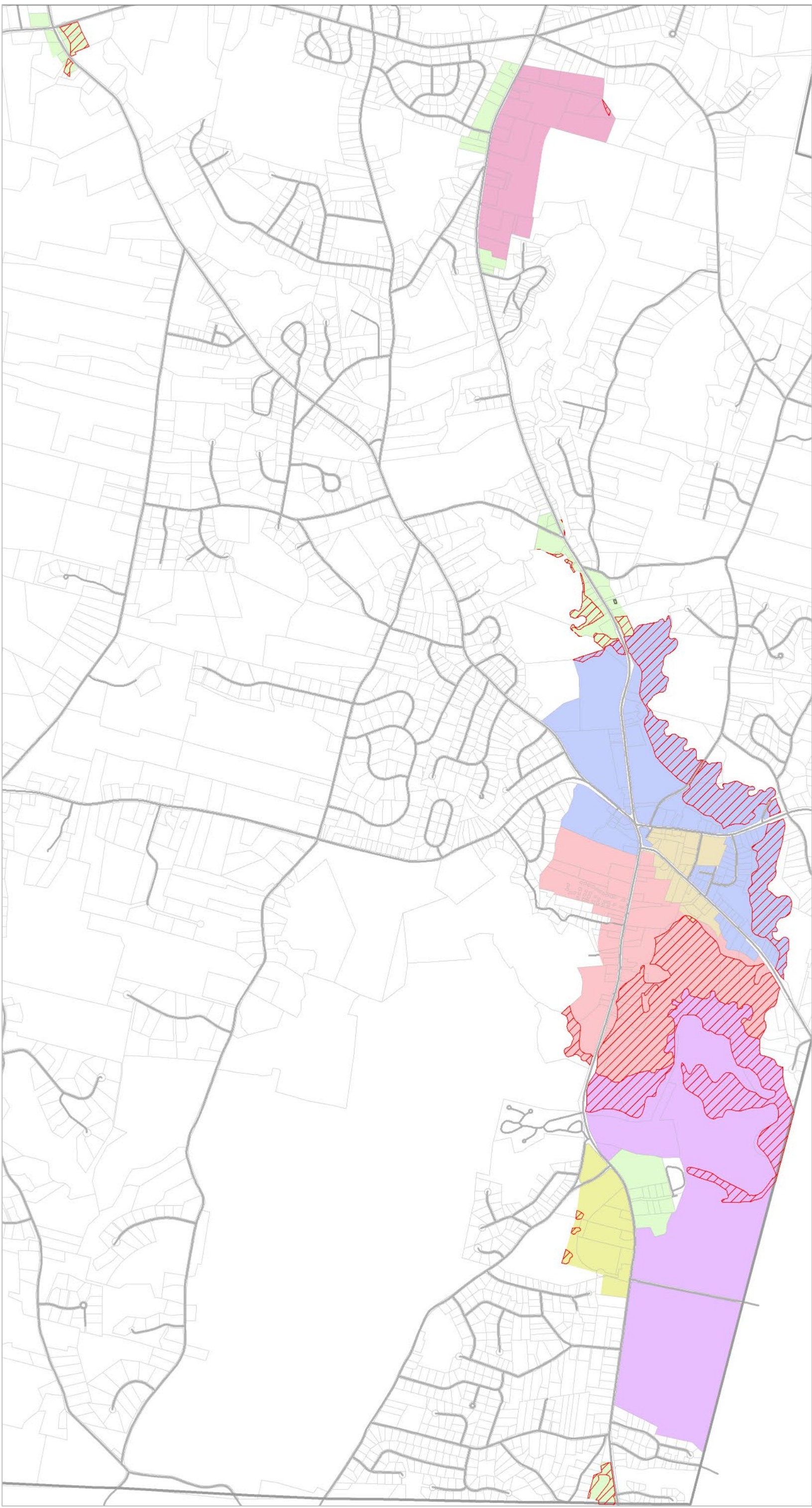


## Commercial Zoning Districts

C2 – COCE – CC – CE – ED – T1



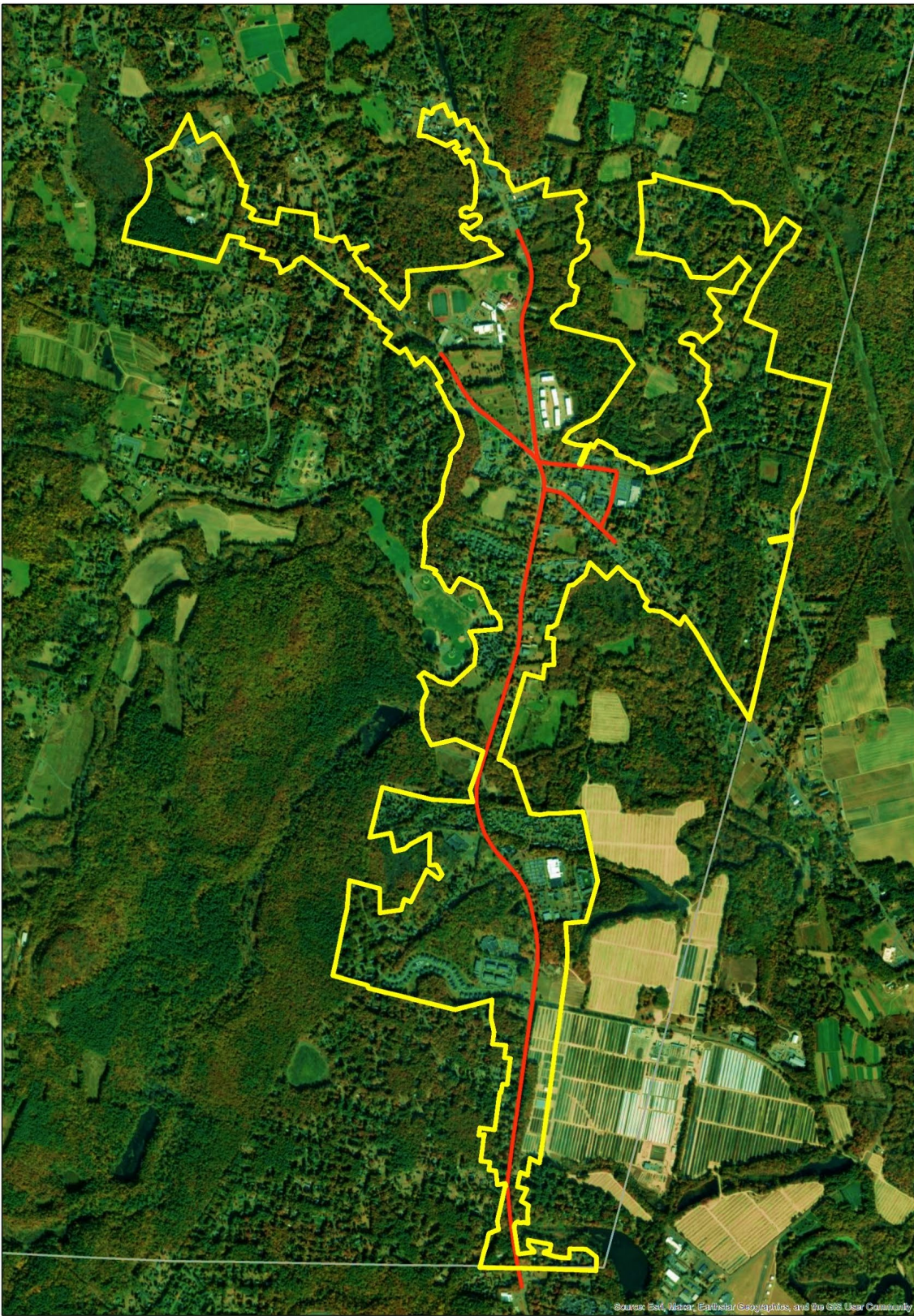
About 1,230 acres are zoned for commercial uses. This is about 5% of Granby's total area.



About 310 acres of commercially zoned land are mapped wetlands. This leaves 920 acres, or about 3.5% of Granby's total area, for commercial development.

## Sewer Service

Sewer lines – Red  
Sewer service area - Yellow



## Water Service

